

Year One

Phonics Screening Check

Children's Materials

2016



lig





chin



mep

gax





deck



horn

emp



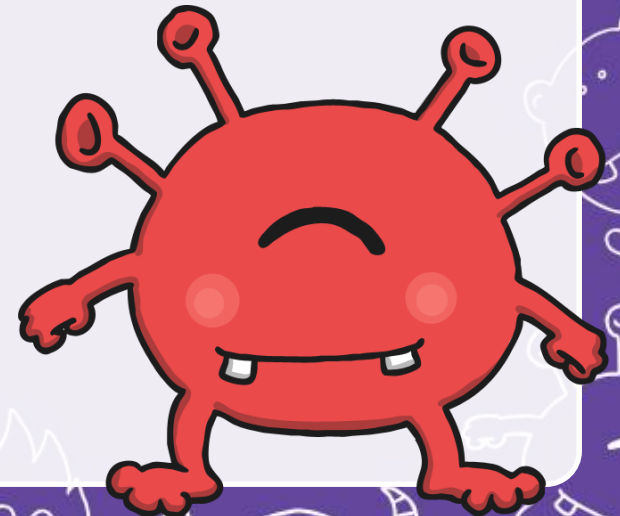
beff





queen

shup



doil



The background is a solid purple color. A white border frames the central area, featuring a repeating pattern of various cartoonish, white-outlined creatures. These include a bat-like monster with wings and a wide grin, a ghost-like figure with a single eye, a bear-like creature with a large mouth and small teeth, a creature with a single eye and a wide smile, a creature with multiple eyes and antennae, and a creature with a large, open mouth showing sharp teeth. The word "tram" is written in a large, bold, black, lowercase sans-serif font in the center of the white area.

tram

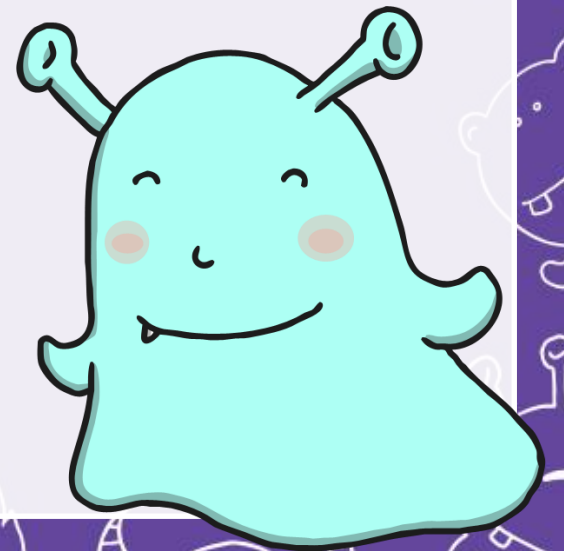
charb





press

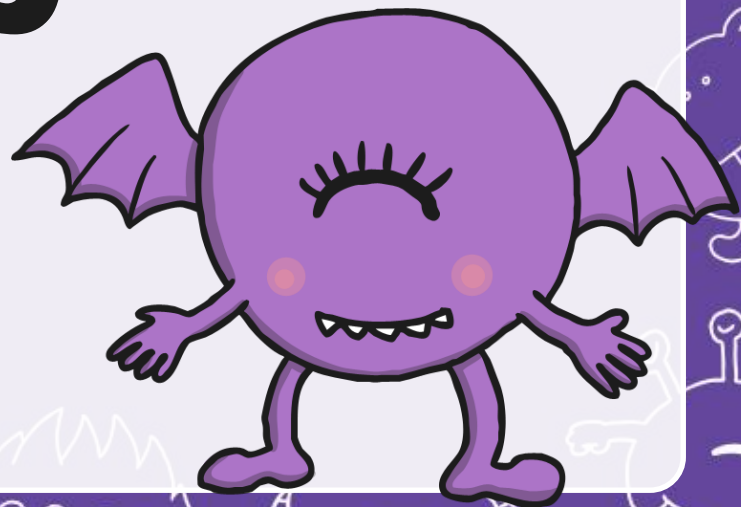
frex





self

criff



haps





keeps

barst





stair



lied



phope

woats





arrow

rird





haunt



wove



scram

floost





drank

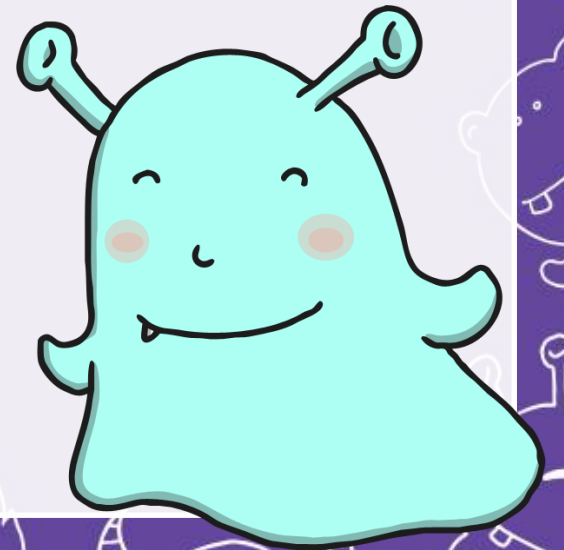


stroke



treats

strobe





wishing



jigh

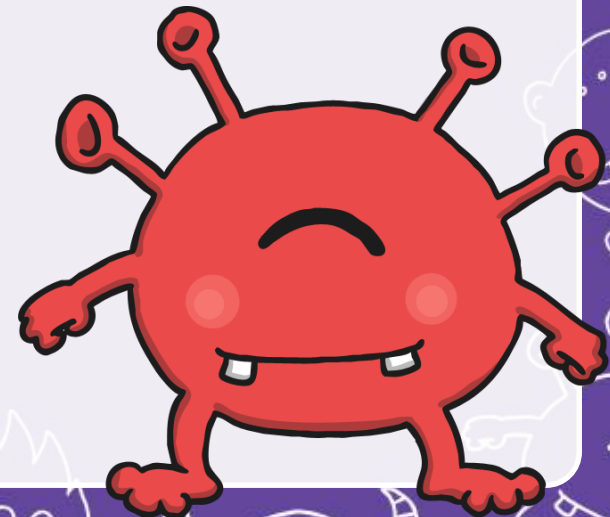
splam





brighter

glips





forest

